

WHITE PLAINS PLAZA | 1 N BROADWAY  
Ultra Prime Space in Premier Downtown Building  
939 – 2,594 SF | Multiple Uses Considered



FOR LEASE:  
RETAIL/FOOD USE  
AVAILABLE IN CLASS-A  
OFFICE COMPLEX

- 939 SF - Raw space
- 1,655 SF – Built-out
- Combine spaces to 2,594 SF
- Gas and venting for food use can be made available
- Approx 20.5 Ft ceiling height
- Storage available
- Included shared outdoor dining
- Private ADA Bathrooms
- On-site parking garage; 1/1,000 parking space(s)

LOCATION:

- Across from Cambria Hotel
- Walk to WP Metro-North
- Across from City Center
- Near I-287, Sprain Brook & Bronx River Parkways



CONTACT OWNER'S  
EXCLUSIVE AGENT:

ALEC FREDERICO: 914-779-8200 x118 [alec@admiralrealestate.com](mailto:alec@admiralrealestate.com)

BROKERS  
PROTECTED

1 N BROADWAY, WHITE PLAINS, NY 10601  
 Ultra Prime Space in Premier Downtown Plaza  
 Space Options: 939 SF | 1,655 SF | 2,594 SF



## PROPERTY INFORMATION

Center: White Plains Plaza @ the Base of  
 720,000 SF Class-A Office Building  
Location: N Broadway @ Corner of Main Street  
Highway Access: I-287 and Bronx River Parkway  
Tenant Parking: 1/1,000 SF in Parking Garage Included  
Customer Parking: Many Public Garages & Street Parking

## KEY FACTS (5-Mile Radius of Site)

POPULATION	MEDIAN AGE
206,914	43.2
AVG INCOME	DISPOSABLE INCOME
\$218,809	\$138,528

## DEMOGRAPHICS

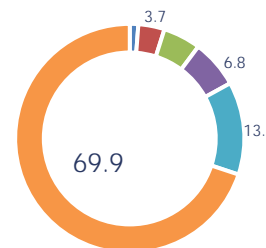
By Radius	1-Mile	3-Mile	5-Mile
Average HH Income	\$141,937	\$183,370	\$218,809
Median HH Income	\$102,738	\$123,171	\$148,371
Population	39,479	109,493	206,914
Total Households	16,923	42,076	74,705
Disposable Income	\$97,355	\$120,205	\$138,528
Financial Value	\$36,945	\$55,205	\$70,097
Medical Expenses	\$8,248	\$3,599	\$4,333

## SPACE HIGHLIGHTS

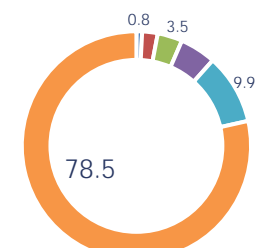
- **Rate: Contact Broker for Specific Details**
- 939 SF - Raw space
- 1,655 SF – Former massage therapy studio
- Spaces can be combined for total of 2,594 SF
- ADA bathrooms and high ceilings
- Located in new and vibrant White Plains Plaza
- Walking distance to Metro-North train station

## 2021 HOME VALUE

(3-Mile Radius)



(5-Mile Radius)



CONTACT OWNER'S  
 EXCLUSIVE AGENT:

ALEC FREDERICO: [914-779-8200](tel:914-779-8200) x118

[alec@admiralrealestate.com](mailto:alec@admiralrealestate.com)

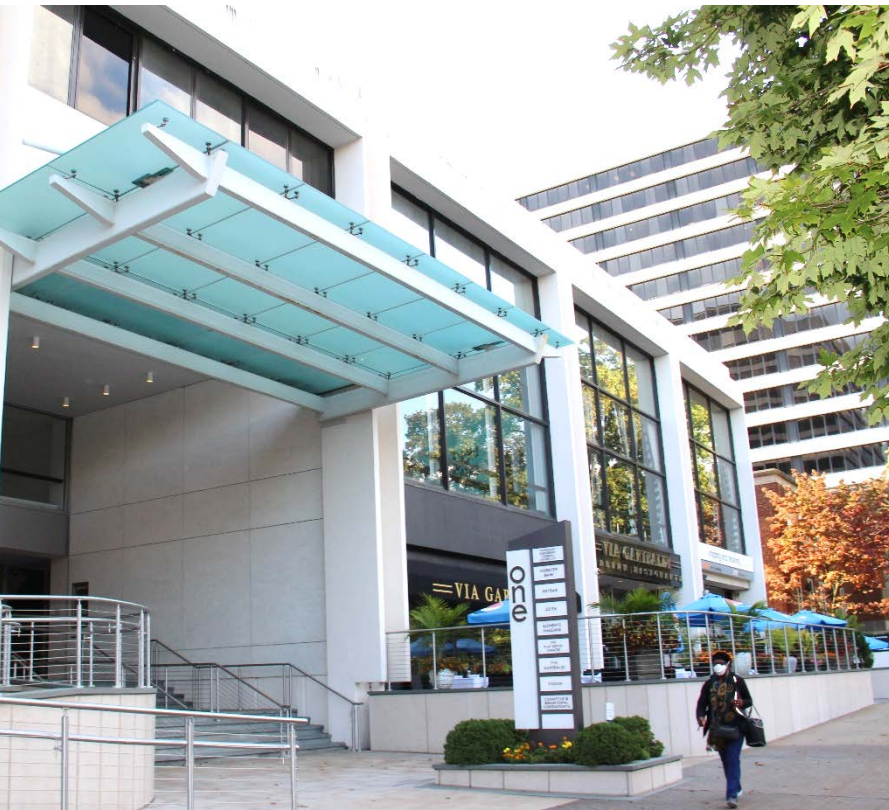
BROKERS  
 PROTECTED



1 N BROADWAY, WHITE PLAINS, NY 10601  
Ultra Prime Space in Premier Downtown Plaza  
Space Options: 939 SF | 1,655 SF | 2,594 SF



## WHITE PLAINS PLAZA | 1 N BROADWAY



CONTACT OWNER'S  
EXCLUSIVE AGENT:

ALEC FREDERICO: [914-779-8200](tel:914-779-8200) x118 [alec@admiralrealestate.com](mailto:alec@admiralrealestate.com)

BROKERS  
PROTECTED

1 N BROADWAY, WHITE PLAINS, NY 10601  
Ultra Prime Space in Premier Downtown Plaza  
Space Options: 939 SF | 1,655 SF | 2,594 SF



## ABOUT WHITE PLAINS PLAZA

### **WHITE PLAINS PLAZA CONSISTS OF TWO CLASS A OFFICE BUILDINGS: 1 NORTH BROADWAY AND 445 HAMILTON AVENUE**

Located in the heart of downtown White Plains, the two 15-story buildings total 720,000 SF of Class-A office space. A recently completed capital improvement program features newly designed building lobbies with curated art installations, state-of-the-art infrastructure, enhanced tenant amenities, new restrooms, upgraded corridors, activated outdoor spaces, a living green wall, a full-service cafeteria with tenant lounge and conference facility at 445 Hamilton Avenue.

**White Plains Plaza has elevated the tenant experience with a mobile application to manage tenant amenities and an enhanced outdoor courtyard complete with seating area at 1 North Broadway.**

The building is conveniently located within walking distance from White Plains Train Station with an exceptional selection of retail and dining options both on-site and nearby. Efficient floor plates, quality amenities, and easy access to Manhattan, airports, and surrounding suburbs make White Plains Plaza a world-class business environment for the workforce of today.

### **LOCAL MAJOR OFFICE TENANTS IN MARKETPLACE**

- Zeiss
- Cognitive & Behavioral Consultants
- Columbia Doctors
- Assured Partners
- Keane & Beane, P.C.
- Stark Office Suites
- Greenburg Traurig
- Regus
- Westchester Business Center
- Restorix Health, Inc.
- Sumitomo Mitsui Banking Corporation



CONTACT OWNER'S  
EXCLUSIVE AGENT:

ALEC FREDERICO: [914-779-8200](tel:914-779-8200) x118 [alec@admiralrealestate.com](mailto:alec@admiralrealestate.com)

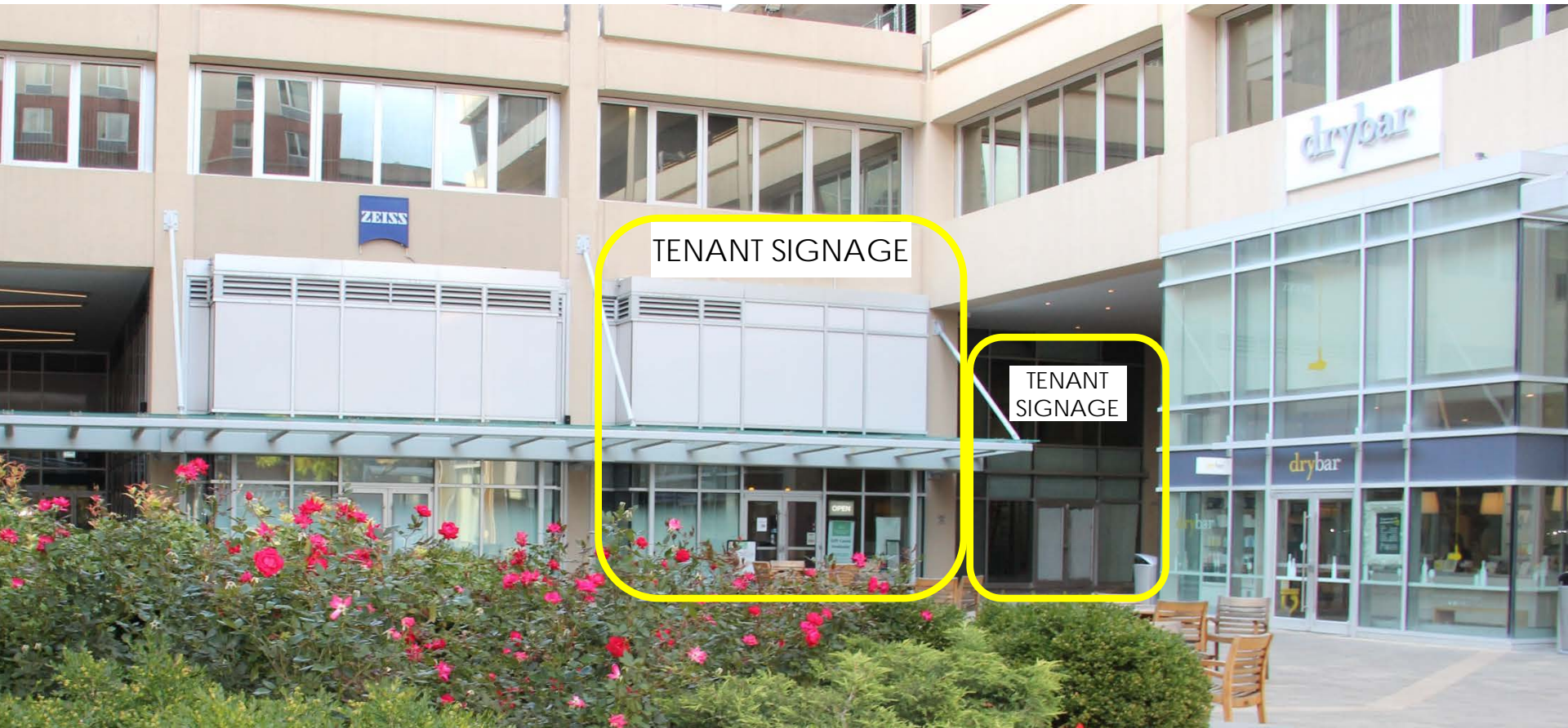
BROKERS  
PROTECTED



1 N BROADWAY, WHITE PLAINS, NY 10601  
Ultra Prime Space in Premier Downtown Plaza  
Space Options: 939 SF | 1,655 SF | 2,594 SF



ENTRANCE 1 OF 2 | VIEW FROM MAIN



CONTACT OWNER'S  
EXCLUSIVE AGENT:

ALEC FREDERICO: [914-779-8200](tel:914-779-8200) x118

[alec@admiralrealestate.com](mailto:alec@admiralrealestate.com)

BROKERS  
PROTECTED

1 N BROADWAY, WHITE PLAINS, NY 10601  
Ultra Prime Space in Premier Downtown Plaza  
Space Options: 939 SF | 1,655 SF | 2,594 SF



ENTRANCE 2 OF 2 | VIEW FROM N BROADWAY



CONTACT OWNER'S  
EXCLUSIVE AGENT:

ALEC FREDERICO: [914-779-8200](tel:914-779-8200) x118

[alec@admiralrealestate.com](mailto:alec@admiralrealestate.com)

BROKERS  
PROTECTED



1 N BROADWAY, WHITE PLAINS, NY 10601  
Ultra Prime Space in Premier Downtown Plaza  
Space Options: 939 SF | 1,655 SF | 2,594 SF



## OUTDOOR

SHARED SEATING/DINING AREA  
WITHIN STEPS OF RETAIL SPACE  
WITH LIVING GREEN WALL



CONTACT OWNER'S  
EXCLUSIVE AGENT:

ALEC FREDERICO: [914-779-8200](tel:914-779-8200) x118

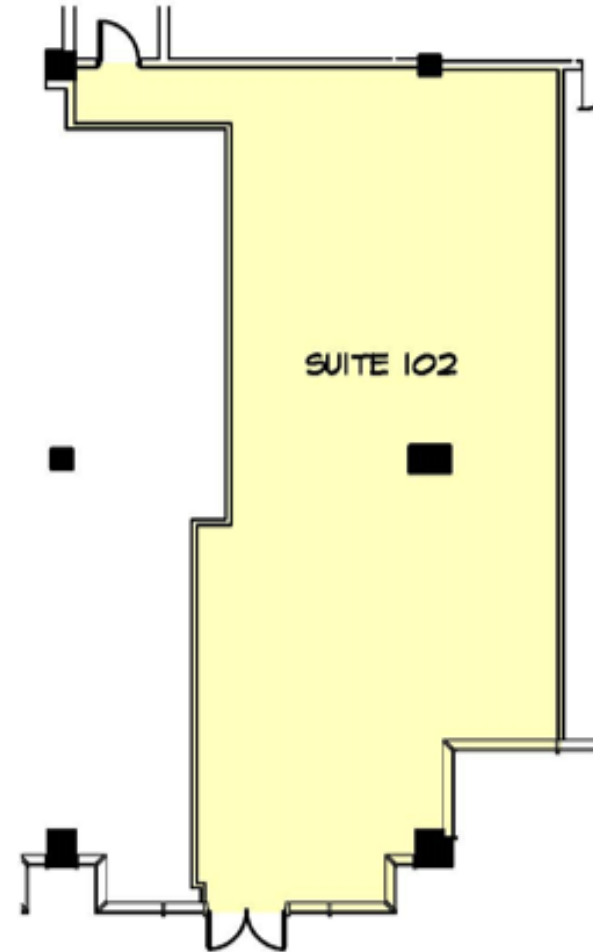
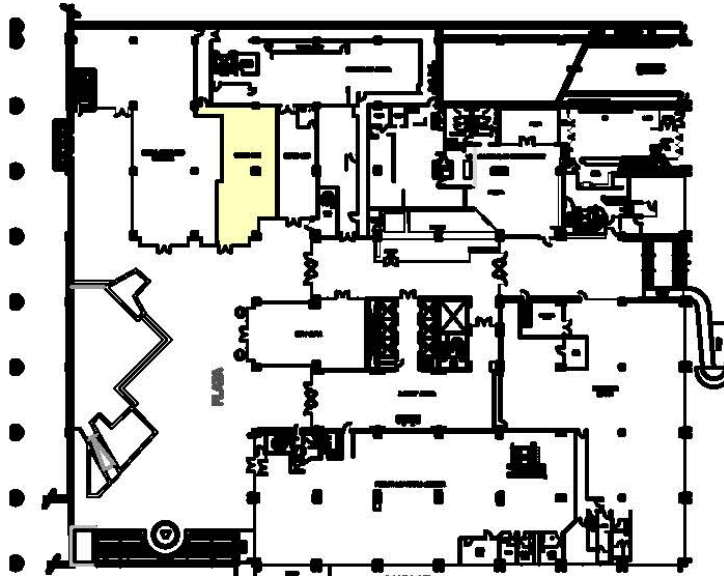
[alec@admiralrealestate.com](mailto:alec@admiralrealestate.com)

BROKERS  
PROTECTED

1 N BROADWAY, WHITE PLAINS, NY 10601  
Ultra Prime Space in Premier Downtown Plaza  
Space Options: 939 SF | 1,655 SF | 2,594 SF



SUITE 102 | 1,655 SF



CONTACT OWNER'S  
EXCLUSIVE AGENT:

ALEC FREDERICO: [914-779-8200](tel:914-779-8200) x118

[alec@admiralrealestate.com](mailto:alec@admiralrealestate.com)

BROKERS  
PROTECTED

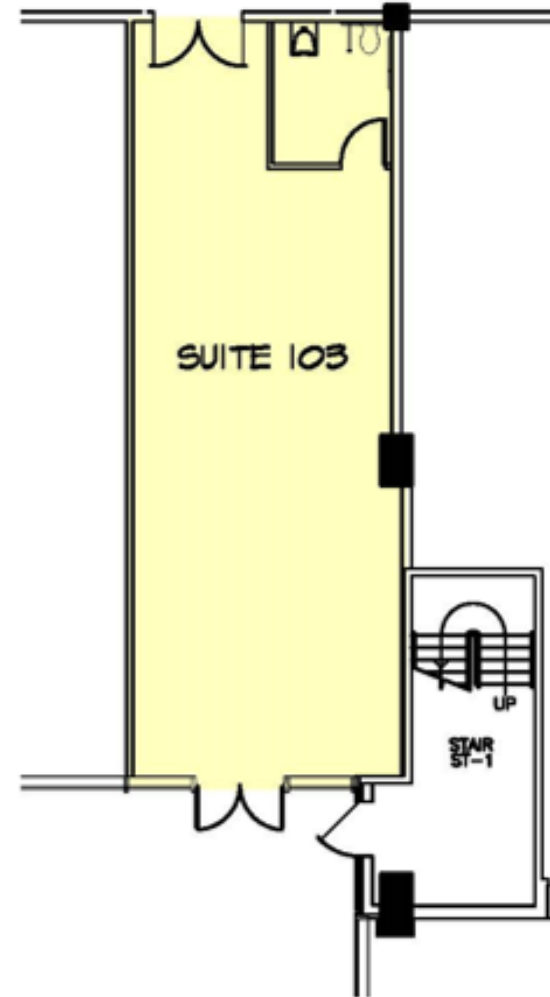
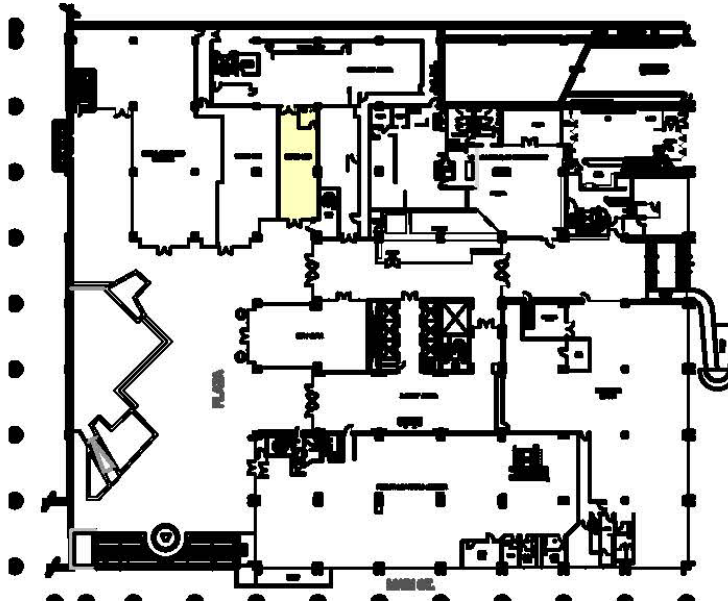


1 N BROADWAY, WHITE PLAINS, NY 10601  
Ultra Prime Space in Premier Downtown Plaza  
Space Options: 939 SF | 1,655 SF | 2,594 SF

ADMIRAL  
REAL ESTATE SERVICES



SUITE 103 | 939 SF



CONTACT OWNER'S  
EXCLUSIVE AGENT:

ALEC FREDERICO: [914-779-8200](tel:914-779-8200) x118

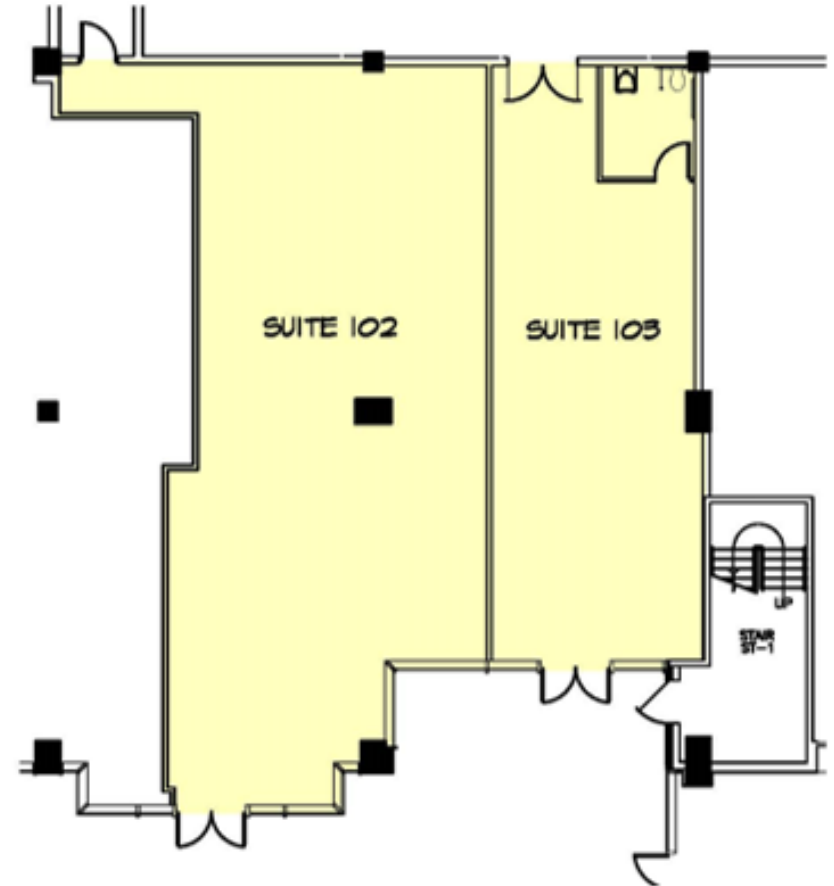
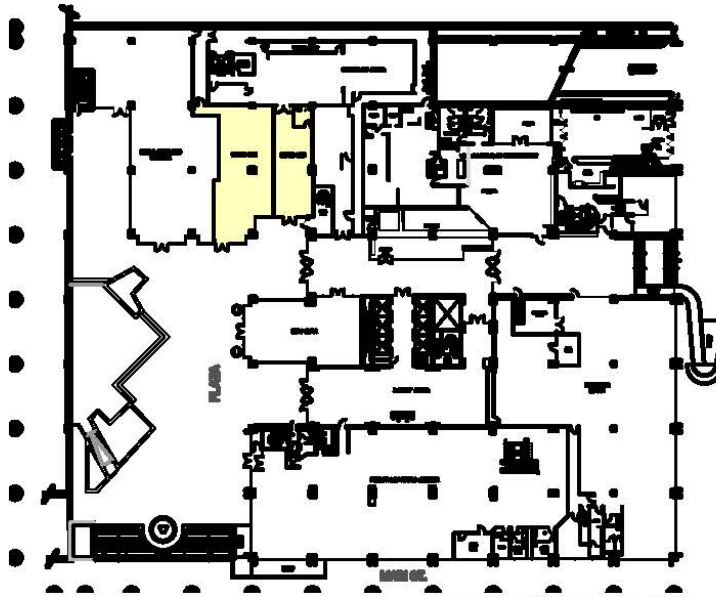
[alec@admiralrealestate.com](mailto:alec@admiralrealestate.com)

BROKERS  
PROTECTED

1 N BROADWAY, WHITE PLAINS, NY 10601  
Ultra Prime Space in Premier Downtown Plaza  
Space Options: 939 SF | 1,655 SF | 2,594 SF



COMBINED SUITES 102 & 103 | 2,594 SF



CONTACT OWNER'S  
EXCLUSIVE AGENT:

ALEC FREDERICO: [914-779-8200](tel:914-779-8200) x118

[alec@admiralrealestate.com](mailto:alec@admiralrealestate.com)

BROKERS  
PROTECTED



1 N BROADWAY, WHITE PLAINS, NY 10601  
Ultra Prime Space in Premier Downtown Plaza  
Space Options: 939 SF | 1,655 SF | 2,594 SF



## WHITE PLAINS, NY – “The Heartbeat of Westchester County”

A burgeoning 18-hour city, White Plains, NY is building on its foundation as an established business and shopping center to attract additional residents, shoppers and businesses. White Plains, NY is a bustling and ever-growing city with an endless assortment dining, entertainment, shopping, and recreational options for all ages. **White Plains has a population of nearly 60,000 which increases to about 150,000 during the day; there is no shortage of potential.**

White Plains, NY is recasting itself as a city for ‘urban living’, which provides symbiotic benefits for residents, visitors and businesses. The CBD’s established business and shopping districts, along with varied restaurant and entertainment options, are requisites for the urban lifestyle, which has in turn fostered the city’s multifamily developments. Thousands of multifamily units have been built in the CBD since 2000, including 300 Mamaroneck Avenue / Jefferson Place & One City Place apartments, 15 Bank Apartments, Ritz-Carlton Residences and the Avalon White Plains.

White Plains is also home to many distinguished medical organizations including New York Presbyterian Behavioral Health Center and White Plains Hospital. Further, White Plains Hospital is a leading healthcare provider in Westchester County and home to many renowned programs and services.



1 N BROADWAY, WHITE PLAINS, NY 10601  
Ultra Prime Space in Premier Downtown Plaza  
Space Options: 939 SF | 1,655 SF | 2,594 SF

ADMIRAL  
REAL ESTATE SERVICES



AERIAL

DOWNTOWN  
WHITE PLAINS



CONTACT OWNER'S  
EXCLUSIVE AGENT:

ALEC FREDERICO: [914-779-8200](tel:914-779-8200) x118

[alec@admiralrealestate.com](mailto:alec@admiralrealestate.com)

BROKERS  
PROTECTED



1 N BROADWAY, WHITE PLAINS, NY 10601  
Ultra Prime Space in Premier Downtown Plaza  
Space Options: 939 SF | 1,655 SF | 2,594 SF



AERIAL

SURROUNDING  
RETAILERS

**CITY CENTER**

TARGET  
ShopRite  
BARNES & NOBLE  
CVS  
BUFFALO WILD WINGS  
NORDSTROM  
rack  
Burlington  
MORTON'S THE STEAKHOUSE  
COLD STONE CREAMERY  
BANK OF AMERICA



VIA GARIBOLDI  
ITALIAN RESTAURANTE  
The Play Group  
Theatre

CAMBRIA  
Hotel White Plains - Downtown  
planet fitness  
chop & go  
CHIPOTLE  
H&R BLOCK  
the FRIDAYS  
CHAZZ PALMINTERI  
Italian Restaurant  
FIVE GUYS  
citibank

UFC  
GYM  
VA

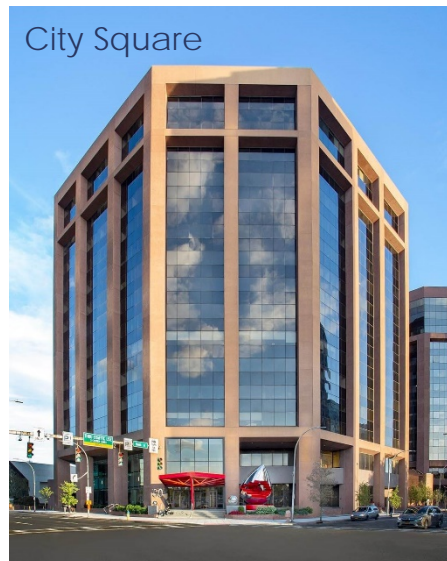
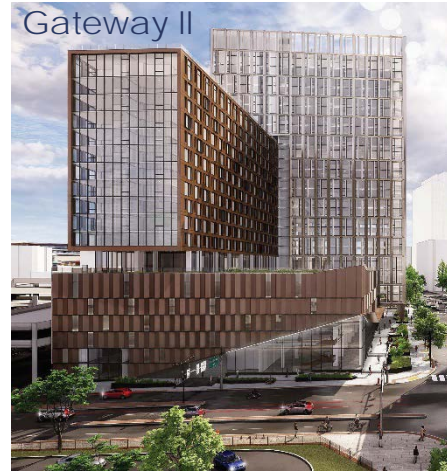
NYSC  
new york sports clubs



1 N BROADWAY, WHITE PLAINS, NY 10601  
Ultra Prime Space in Premier Downtown Plaza  
Space Options: 939 SF | 1,655 SF | 2,594 SF

## NEW DOWNTOWN DEVELOPMENTS

Nearly 1,200 residential units and 300,00 SF of commercial space will be completed next year. Altogether, more than 7,400 new residential units and over 1.46 million SF of commercial space will have been created in White Plains within the next few years.





1 N BROADWAY, WHITE PLAINS, NY 10601  
Ultra Prime Space in Premier Downtown Plaza  
Space Options: 939 SF | 1,655 SF | 2,594 SF

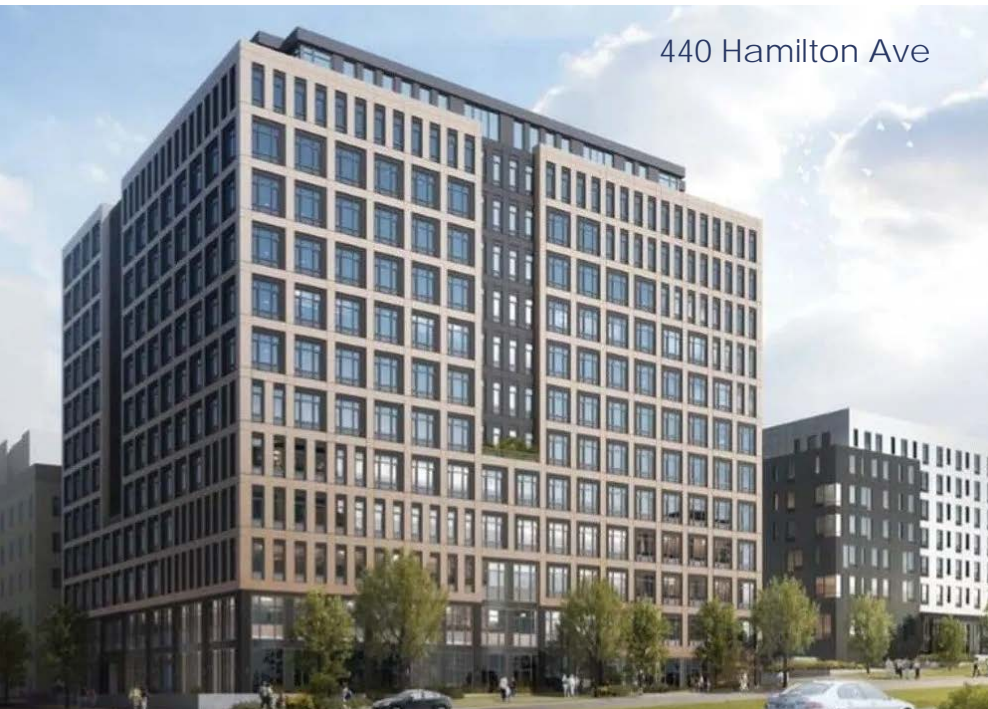


## NEW DOWNTOWN DEVELOPMENTS

51 S Broadway



440 Hamilton Ave



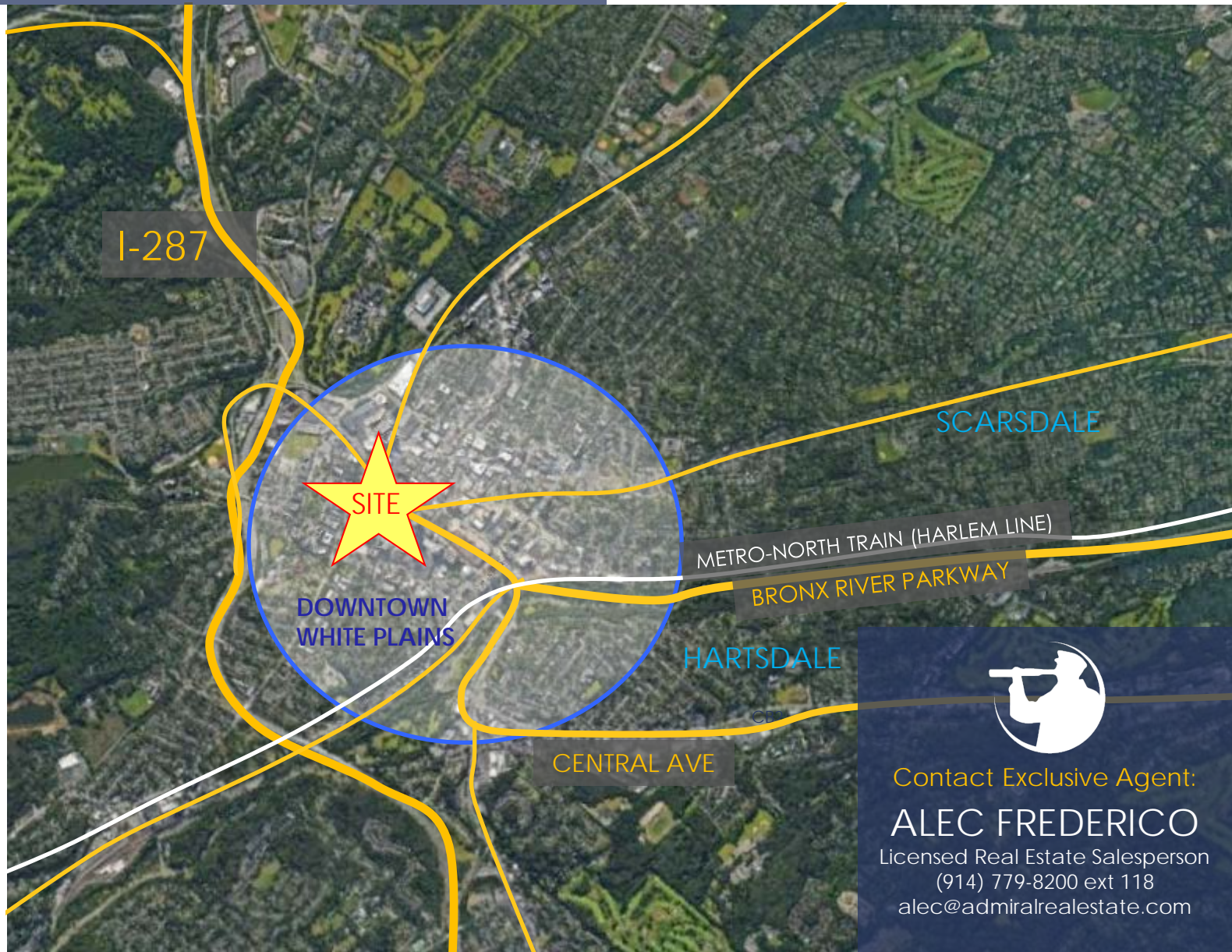
60 S Broadway





1 N BROADWAY, WHITE PLAINS, NY 10601  
Ultra Prime Space in Premier Downtown Plaza  
Space Options: 939 SF | 1,655 SF | 2,594 SF

AERIAL  
REGIONAL  
MAP



Contact Exclusive Agent:

**ALEC FREDERICO**

Licensed Real Estate Salesperson

(914) 779-8200 ext 118

[alec@admiralrealestate.com](mailto:alec@admiralrealestate.com)