



DOWNTOWN BRONXVILLE OFFICE FOR LEASE

SINGLE OFFICE SUITE
Call for Rental Information

- 2nd Floor Office
- Across the from Elevator
- Adjacent Municipal Lot and Street Parking
- Quick Walk to Coffee Shops, Restaurant, Delis, Dry Cleaning, Parks, Grocery, Boutique Retail Shops, Drug Stores, Banks, etc.
- 2-Minute Walk to Metro-North
- 31-Minutes to Midtown Manhattan



Walk to All Retailers Including:



EXCLUSIVE
AGENTS:

ALEC FREDERICO
JON GORDON

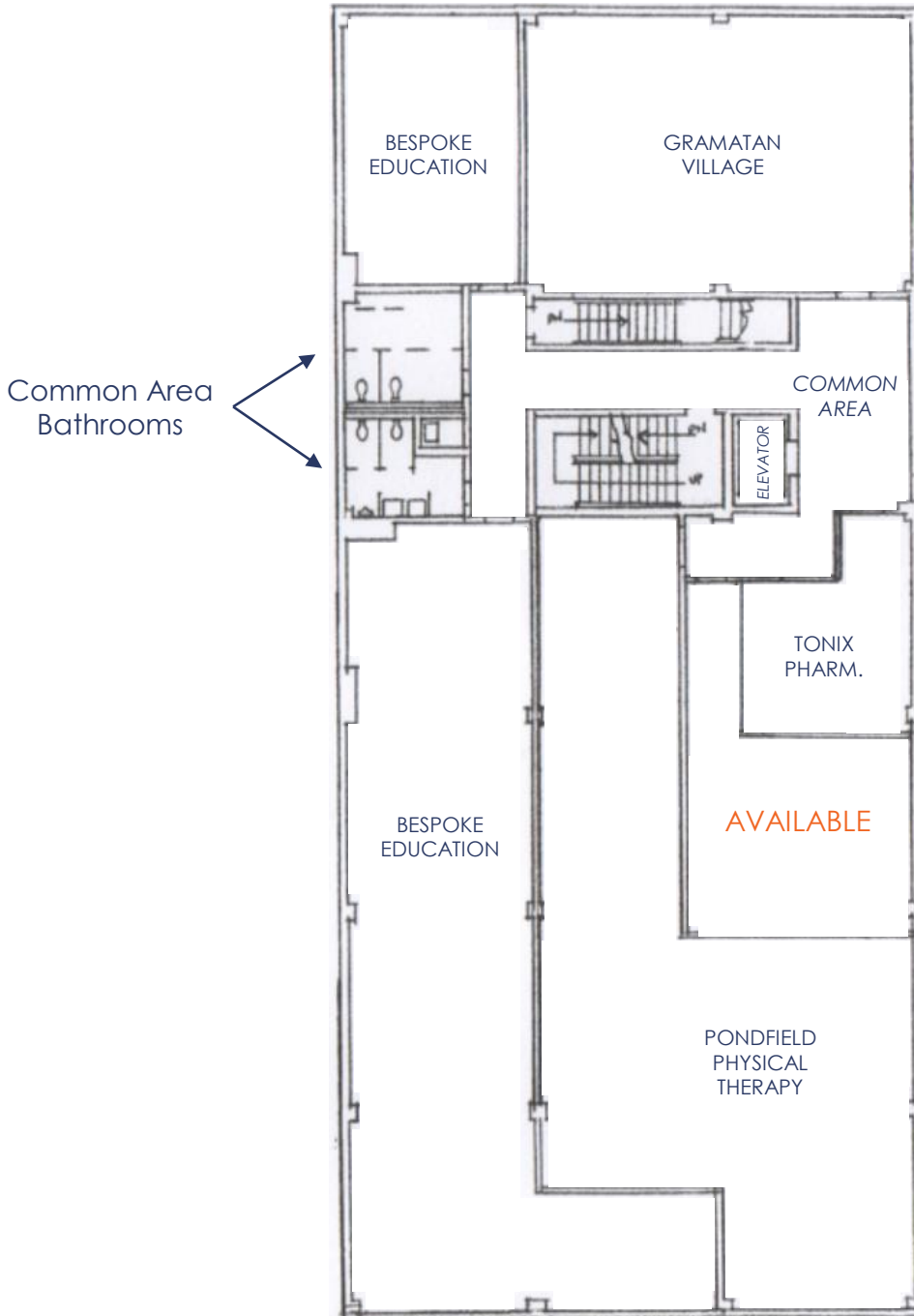
914-779-8200 x118
914-779-8200 x115

ALEC@ADMIRALREALESTATE.COM

JGORDON@ADMIRALREALESTATE.COM

BROKERS
PROTECTED

FLOOR PLAN



EXCLUSIVE
AGENTS:

ALEC FREDERICO 914-779-8200 x118 ALEC@ADMIRALREALESTATE.COM
JON GORDON 914-779-8200 x115 JGORDON@ADMIRALREALESTATE.COM

BROKERS
PROTECTED

New York - Presbyterian
Lawrence Hospital



ADMIRAL

Bronxville Village
Retail Map

Bronxville Station



★
Office Location
(2nd Floor)

Not to be re-printed or distributed without prior written permission from Admiral Real Estate Services, Corp. All rights reserved.

EXCLUSIVE
AGENTS:

ALEC FREDERICO
JON GORDON

914-779-8200 x118
914-779-8200 x115

ALEC@ADMIRALREALESTATE.COM

JGORDON@ADMIRALREALESTATE.COM

BROKERS
PROTECTED

ADMIRAL REAL ESTATE SERVICES CORP. 62 Pondfield Rd Bronxville, NY 10708 Jonathan H. Gordon, Corporate Broker admiralrealestate.com

All information furnished regarding property for sale or rental is from sources deemed reliable, but no representations or warranties, express or implied, are made as to the accuracy thereof.